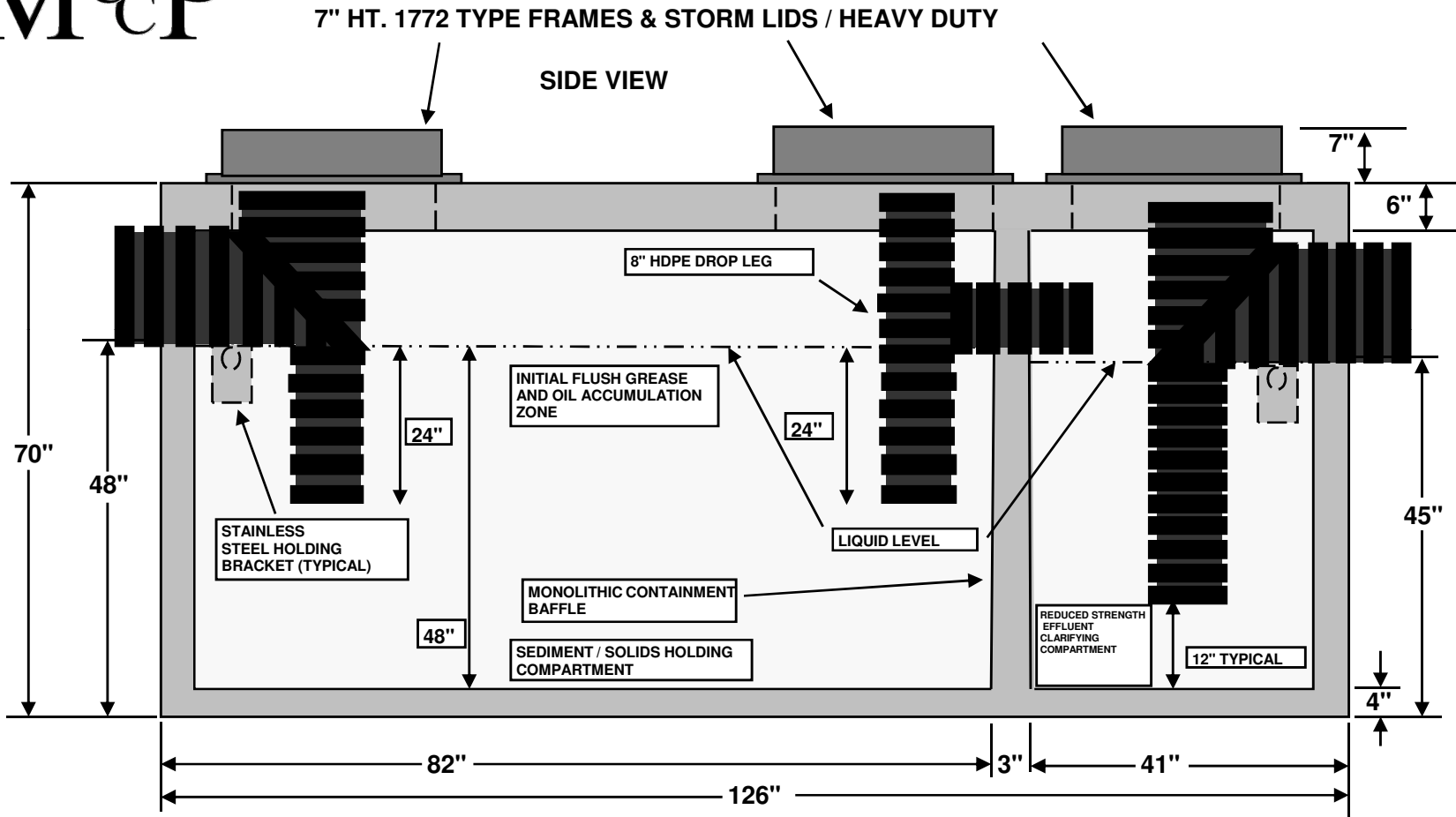


MCCREARY CONCRETE PRODUCTS, INC.
RUSHVILLE & CARMEL, INDIANA
765-932-3058 OR 317-844-5157

1500 SERIES HYDRAULIC STORMWATER CLARIFYING UNIT
H-20 LOAD BEARING, TRAFFIC RATED, TWO COMPARTMENT

MCP



NOT TO SCALE

STRUCTURE WEIGHT 14,013 LBS.

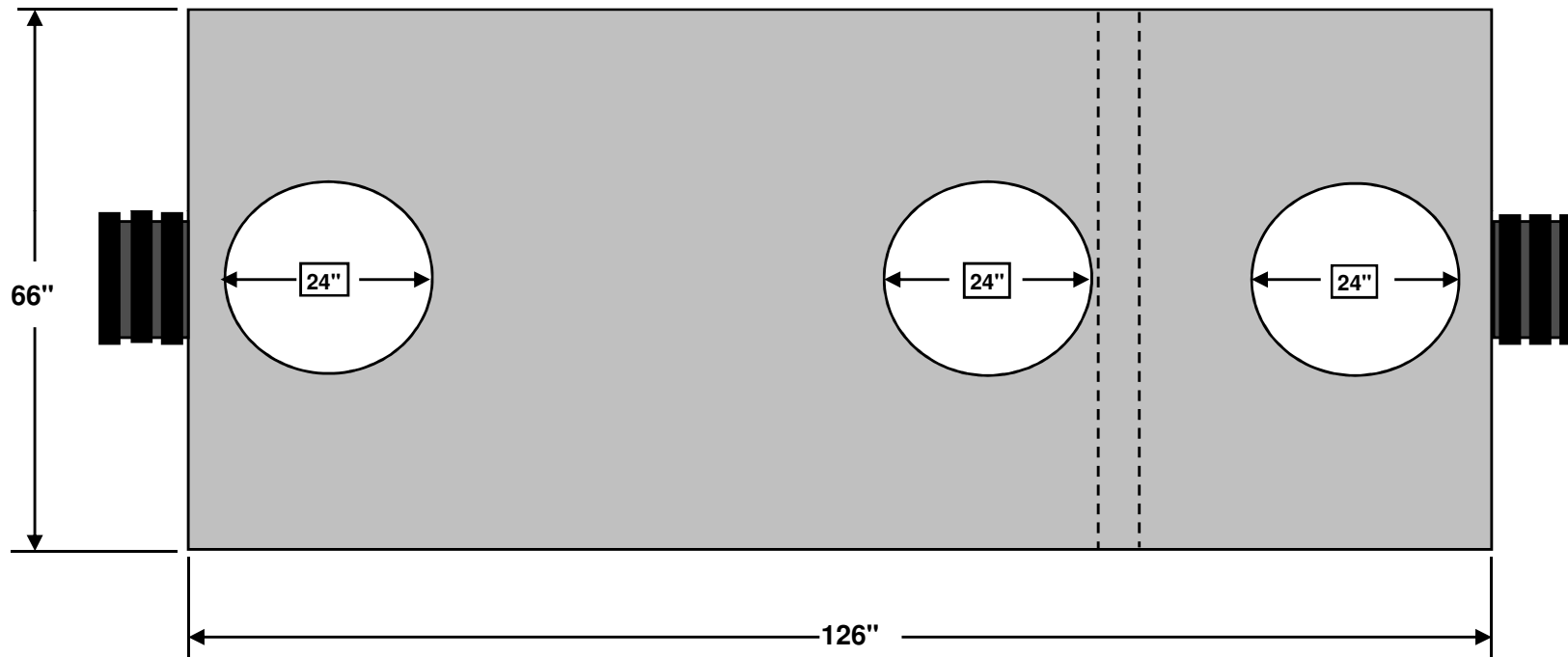
RC10142009

MCCREARY CONCRETE PRODUCTS, INC.
RUSHVILLE & CARMEL, INDIANA
765-932-3058 OR 317-844-5157

1500 SERIES HYDRAULIC STORMWATER CLARIFYING UNIT
H-20 LOAD BEARING, TRAFFIC RATED, TWO COMPARTMENT

M^CP

TOP VIEW



NOT TO SCALE

STRUCTURE WEIGHT 14,013 LBS.

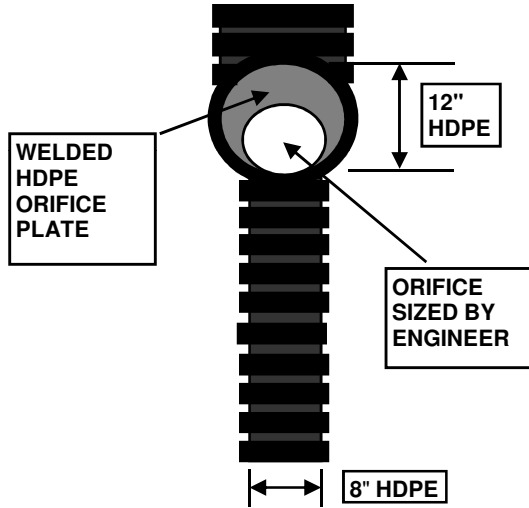
RC10142009

MCCREARY CONCRETE PRODUCTS, INC.
RUSHVILLE & CARMEL, INDIANA
765-932-3058 OR 317-844-5157

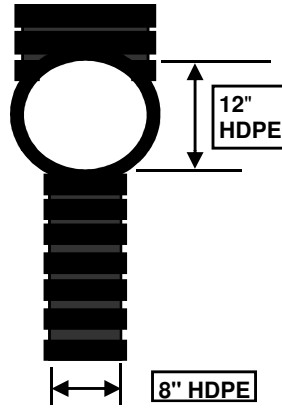
M&C&P

1500 SERIES HYDRAULIC STORMWATER CLARIFYING UNIT
H-20 LOAD BEARING, TRAFFIC RATED, TWO COMPARTMENT

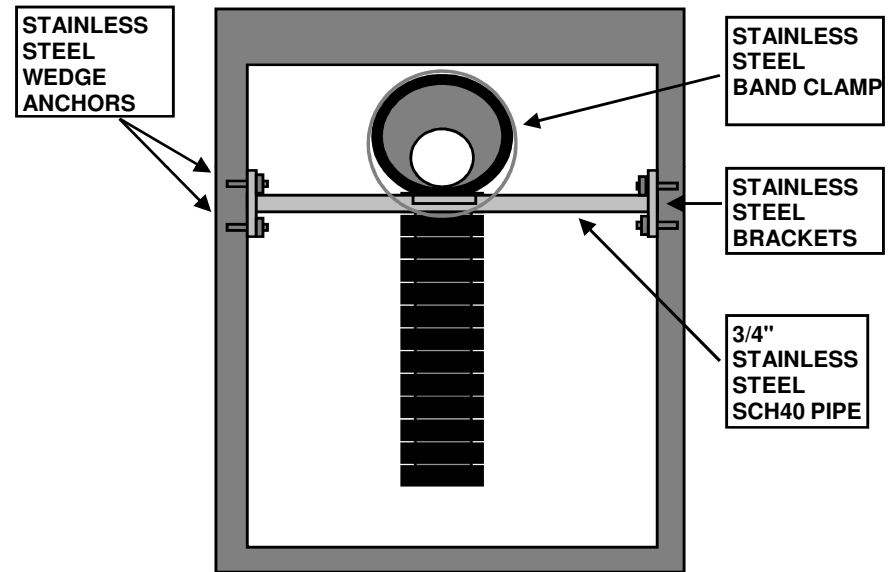
HYDRAULIC FLOW OUTLET
CONTROL DEVICE
(TYPICAL DETAIL)



HYDRAULIC FLOW INLET AND INNER
COMPARTMENT CONTROL DEVICE
(TYPICAL DETAIL)



HYDRAULIC FLOW CONTROL DEVICE
STAINLESS STEEL BRACKET DETAIL



NOTE: CONTROL DEVICES CAN BE MANUFACTURED UTILIZING PIPE SIZES FROM 6" TO 18" HDPE.
DESIGN SHOWN IS EASILY MODIFIED PER SITE SPECIFICATION. WEIR PLATES CAN BE ELIMINATED
AND DROP LEGS CAN BE THE SAME SIZE AS THE INCOMING AND OUTGOING PIPES.

END VIEW
CUTAWAY

NOT TO SCALE

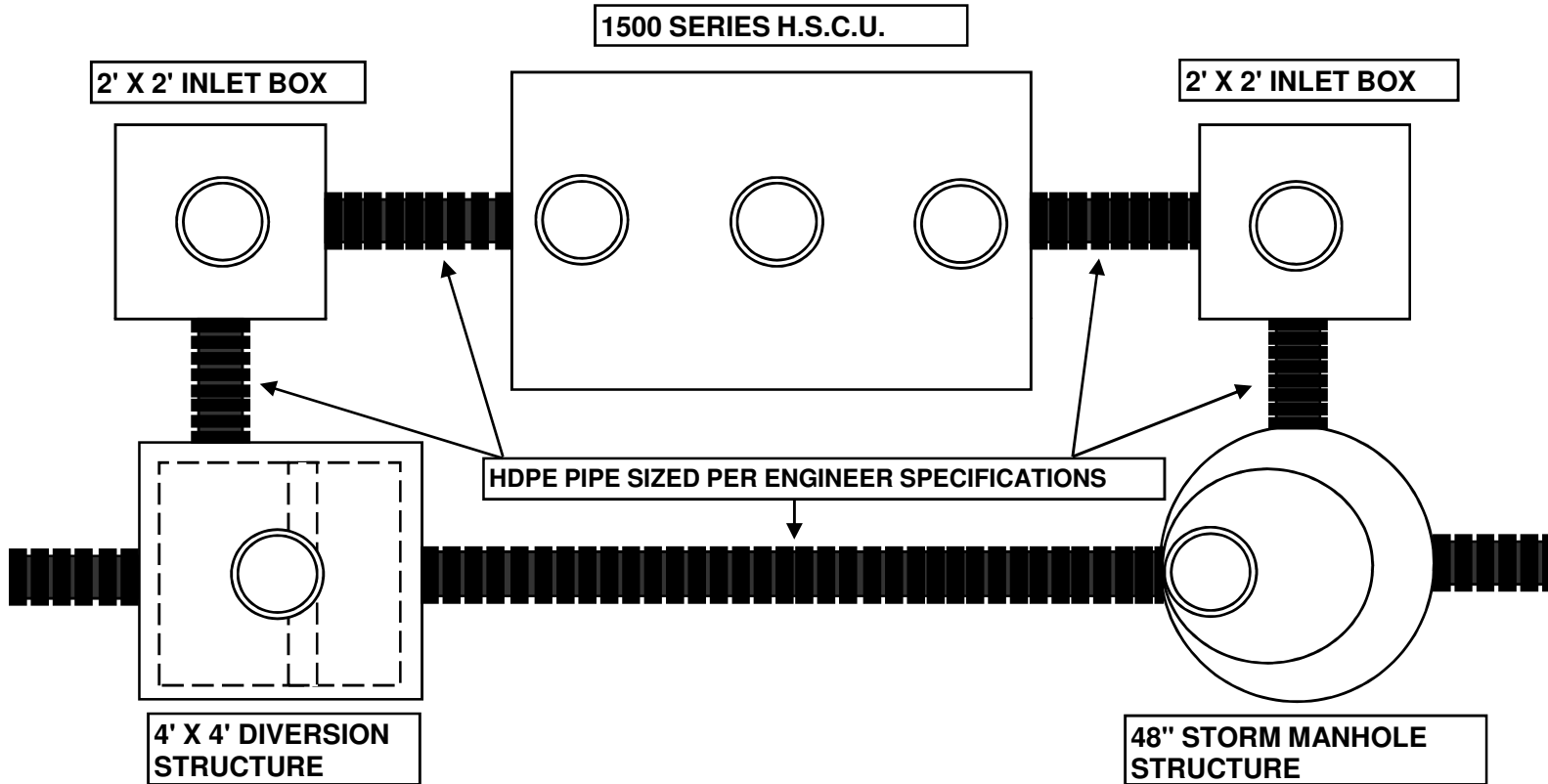
RC10142009

MCCREARY CONCRETE PRODUCTS, INC.
RUSHVILLE & CARMEL, INDIANA
765-932-3058 OR 317-844-5157

1500 SERIES HYDRAULIC STORMWATER CLARIFYING UNIT
H-20 LOAD BEARING, TRAFFIC RATED, TWO COMPARTMENT

MCP

OPTIONAL HSCU WITH STORMWATER BYPASS
OR DIVERSION LAYOUT



NOTE: THIS DESIGN WILL ACCOMMODATE CAPTURE OF OILS, GREASE, SOLIDS DURING THE INITIAL RAIN EVENT. WHEN FLOWS EXCEED A SPECIFIED AMOUNT THEY WILL CREST THE WEIR WALL IN THE DIVERSION STRUCTURE AND BYPASS THE H.S.C.U. THE ACTUAL WEIR WALL HEIGHT IS TO BE DETERMINED BY THE ENGINEER.

NOT TO SCALE

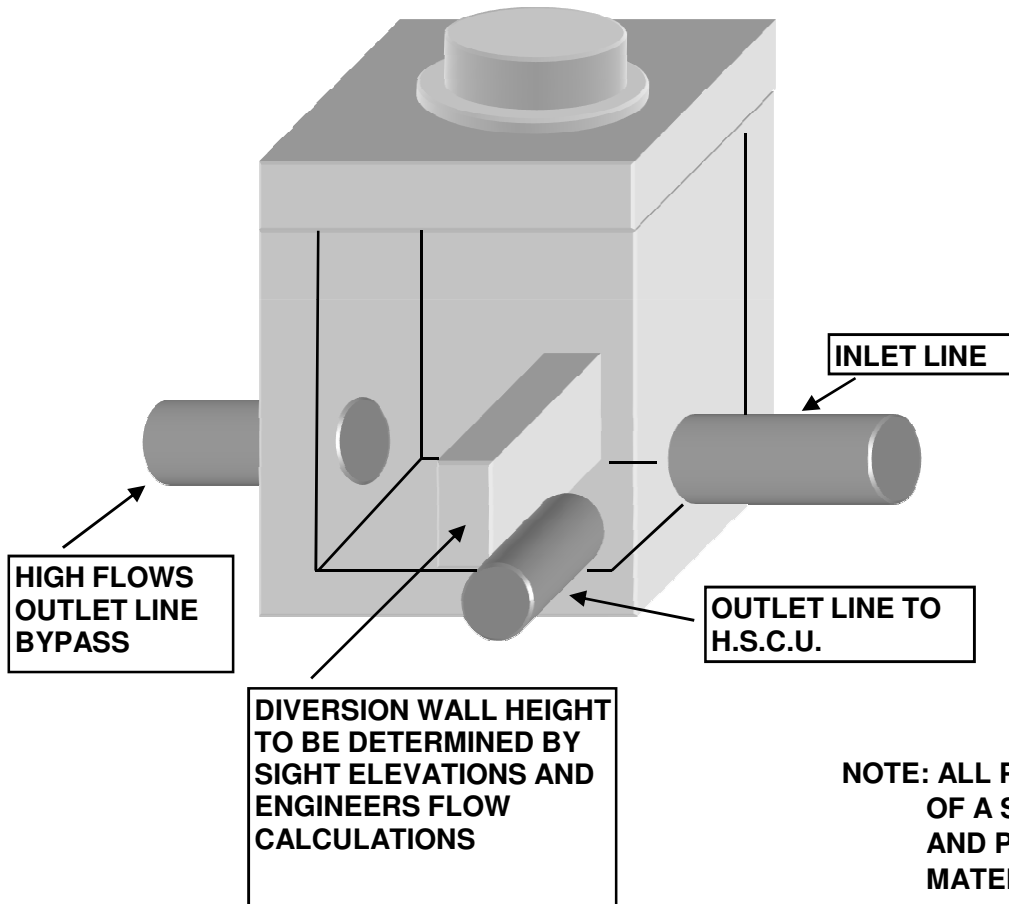
RC10142009

MCCREARY CONCRETE PRODUCTS, INC.
RUSHVILLE & CARMEL, INDIANA
765-932-3058 OR 317-844-5157

1500 SERIES HYDRAULIC STORMWATER CLARIFYING UNIT
H-20 LOAD BEARING, TRAFFIC RATED, TWO COMPARTMENT

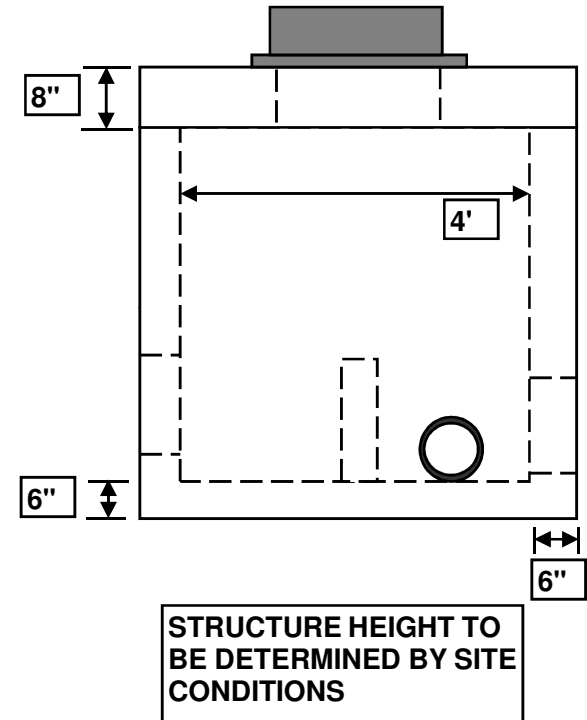


TYPICAL DIVERSION STRUCTURE
(CORNER CUTAWAY VIEW)



NOT TO SCALE

TYPICAL DIVERSION STRUCTURE
(SIDE VIEW)



NOTE: ALL PIPE SIZES SHOWN ARE ONLY A REPRESENTATION OF A SPECIFIC JOB. EACH SITE WILL REQUIRE PIPE SIZING AND PARTICULAR APPLICATION OF SOME OR ALL OF THESE MATERIALS BY THE ENGINEER FOR THIS PROJECT.

RC10142009