



MCCREARY CONCRETE PRODUCTS, INC.
RUSHVILLE AND CARMEL, INDIANA
765-932-3058 OR 317-844-5157



McCreary Concrete is a Hoosier owned and Operated Company, with offices in Indianapolis and Rushville.

6'x10' x 7' JOB READY METER VAULT W/ 6" PROTECTUS III FIRE SERVICE
METER & VALVE ASSEMBLY

DATE: 2/3/2010	DRAWN BY: DCS	DRAWING #:
SCALE: NTS	CHECKED BY: RMC	
CUSTOMER: F.E.I.	P.O. # WAL-MART GAS CITY	232010IAWCMVL6X4

ITEM	REQ.	ITEM DESCRIPTION
4	1	30" SQ. ALUM. HATCH, SPRING ASSIST, LEF FAB 1P55030
5	1	7' 3" ALUMINUM LADDER W 4/ WALL MOUNTS
6	6	3/8" STAINLESS ANCHOR BOLT
7	4	3/8" STAINLESS WASHER
8	4	3/8" STAINLESS NUT
9	4	4" OR 6" LINK-SEAL BASED ON D.I. SIZE
10	4	STAINLESS STEEL PIPE SUPPORT
11	2	SUMP PIT W/ GRATE, HDPE BY POLY-LOK
12	1	SUMP PUMP ASSEMBLY SUPPLIED BY OTHERS
13	2	6" X 4" D.I. FLANGED TEE
14	2	4" D.I. FLANGED 90 DEG ELL
15	1	4" FLANGED GATE VALVE
16	1	4" X VARIES D.I. PIPE

6" DOUBLE CHECK VALVE DETAILS		
ITEM	REQ.	ITEM DESCRIPTION
1	2	6" X VARIES D.I. PIPE
2	2	6" DIA. FLANGED GATE VALVE
3	1	6" PROTECTUS III FIRE SERVICE METER

NOTES:

- A) VAULT TO BE SEALED AT JOBSITE WITH 2 1/4" X 3/4" BUTYL SEALANT.
- B) SUMP PUMP REQUIRES A 20 AMP, 120 VOLT, SINGLE PHASE CIRCUIT PROVIDED BY OTHERS.
- C) TO PREVENT EXCESSIVE CYCLING OF PUMP, ROUTE SUMP DISCHARGE LINE AWAY FROM VAULT TO NEAREST DRAIN.
- D) TO PREVENT FLOATATION OF STRUCTURE, SUMP PIT IS NOT WATERTIGHT.

STANDARDS OF DESIGN

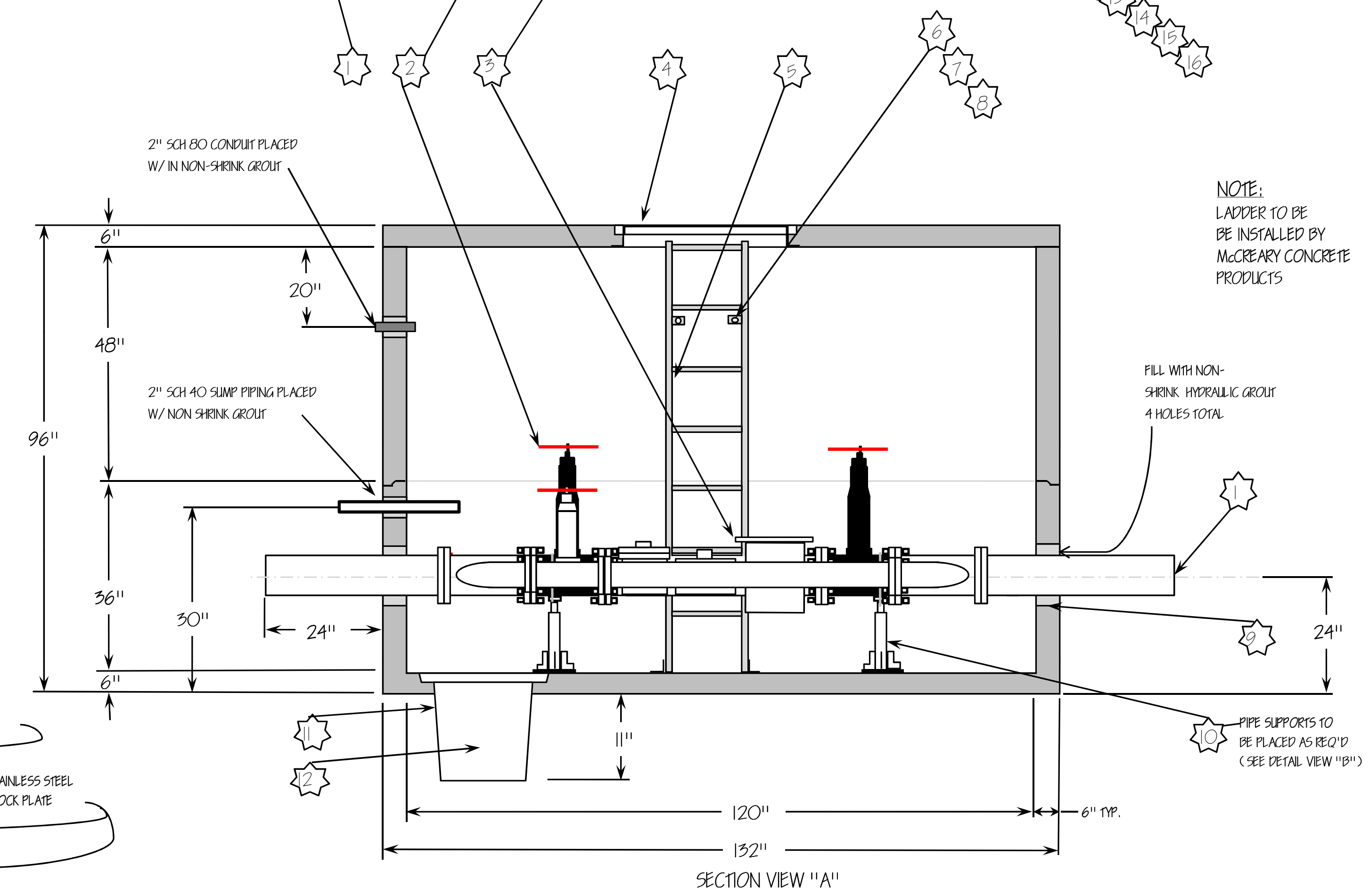
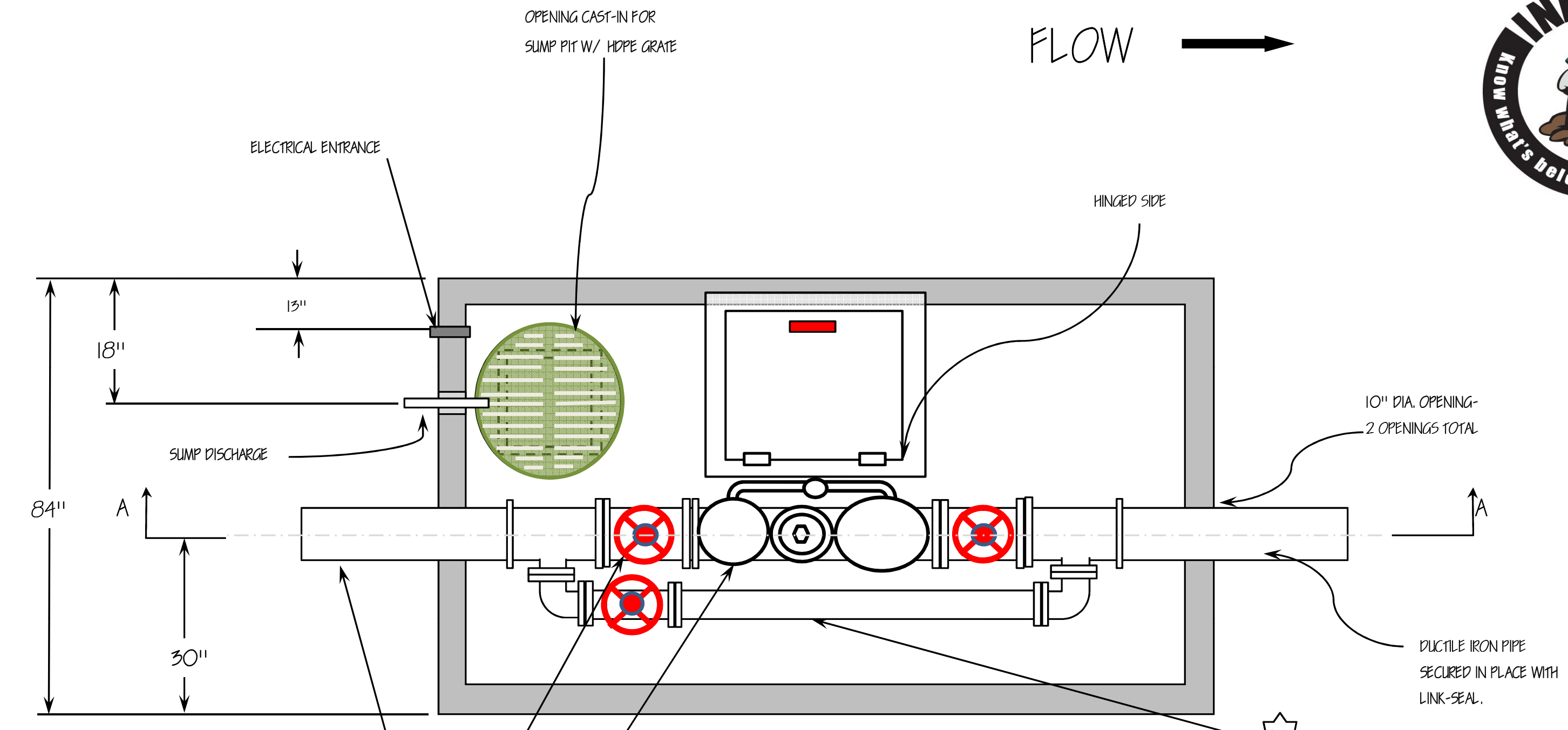
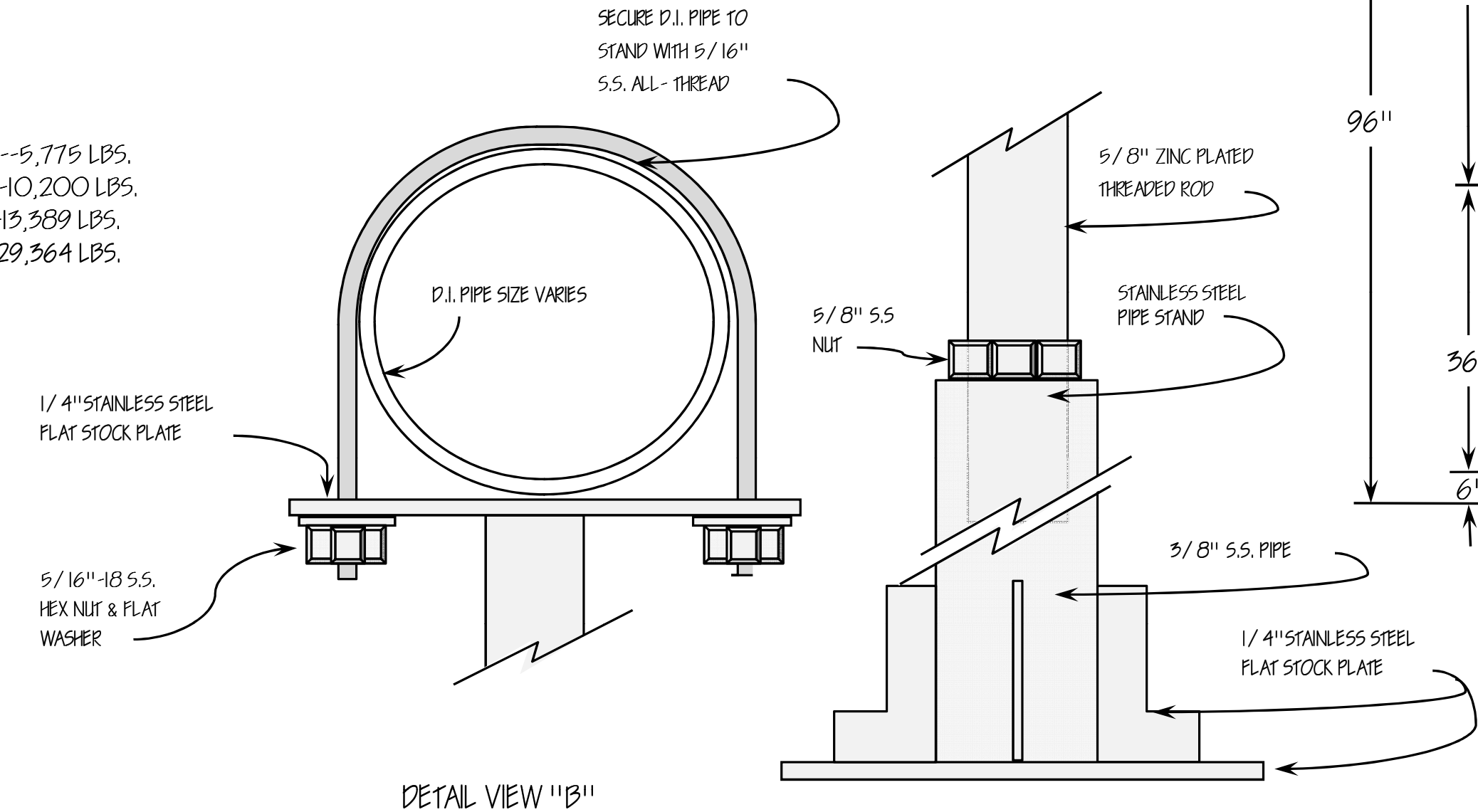
- A) CONCRETE MINIMUM COMPRESSIVE STRENGTH F'c= 4,500 PSI @ 28 DAYS
- B) REINFORCING STEEL: ASTM A706, Fy= 60,000 PSI
- C) DESIGN SPECIFICATIONS: ACI 318
- D) DESIGN LOADING: NON-TRAFFIC BEARING

DESIGN SPECIFICS

- A) NO GROUND WATER
- B) NO EARTH COVER

STRUCTURE WEIGHTS

- TOP SLAB -----5,775 LBS.
- MID RISER -----10,200 LBS.
- BOTTOM SLAB WITH WALLS-----13,389 LBS.
- TOTAL STRUCTURE WEIGHT-----29,364 LBS.



NOTE:
LADDER TO BE
BE INSTALLED BY
MCCREARY CONCRETE
PRODUCTS

FILL WITH NON-
SHRINK HYDRAULIC GROUT
4 HOLES TOTAL

PIPE SUPPORTS TO
BE PLACED AS REQ'D
(SEE DETAIL VIEW "B")